



Warren Greeff
072 192 2693
warren@aska.co.za



Corlia Cohen
0716048493
corlia@aska.co.za

Contact Head Office

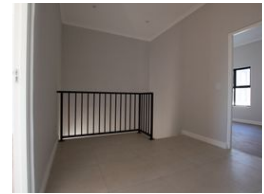
021 5562333

Aska House, Newlands on Main, 1st Floor,
Piazza Level, Main Rd, Newlands

3 Bedroom Duplex For Sale in Sandown



Web Ref 1001



R2,999,000

3 2.5 2

Monthly Bond Repayment R30,446.72

Calculated over 20 years at 10.75% with no deposit.

Transfer Costs R160,101.00 **Bond Costs** R42,185.00

These calculations are only a guide. Please ask your conveyancer for exact calculations.

Monthly Levy R1,712

Brand-New Secure Development in Sandown – No Transfer Duty!

Introducing Knightswood – a stylish new townhouse development in the heart of sought-after Sandown. With only a few of the 16 homes still available and selling fast, now is the time to secure your spot!

Estimated occupation: August 2025

Estimated levies: R1 712/month

Each north-facing home offers a sunny, open-plan living area with large-format tiles, flowing seamlessly to a private garden through sliding doors. The kitchen boasts modern finishes, including a gas hob, quartz countertops, eye-level oven, and designer backsplash. Direct access from the double garage into the entrance hall adds everyday convenience, with a guest cloakroom on the ground floor.

Upstairs features three spacious bedrooms, a full family bathroom with skylight, and a main en-suite. A landing area is perfect for a home office.

Extras...

Features

Interior

Bedrooms 3
Bathrooms 2.5
Kitchens 1
Recep. Rooms 2
Furnished No

Exterior

Garages 2
Security Yes
Pool No
Views False

Sizes

Floor Size 163m²

