



Warren Greeff
072 192 2693
warren@aska.co.za



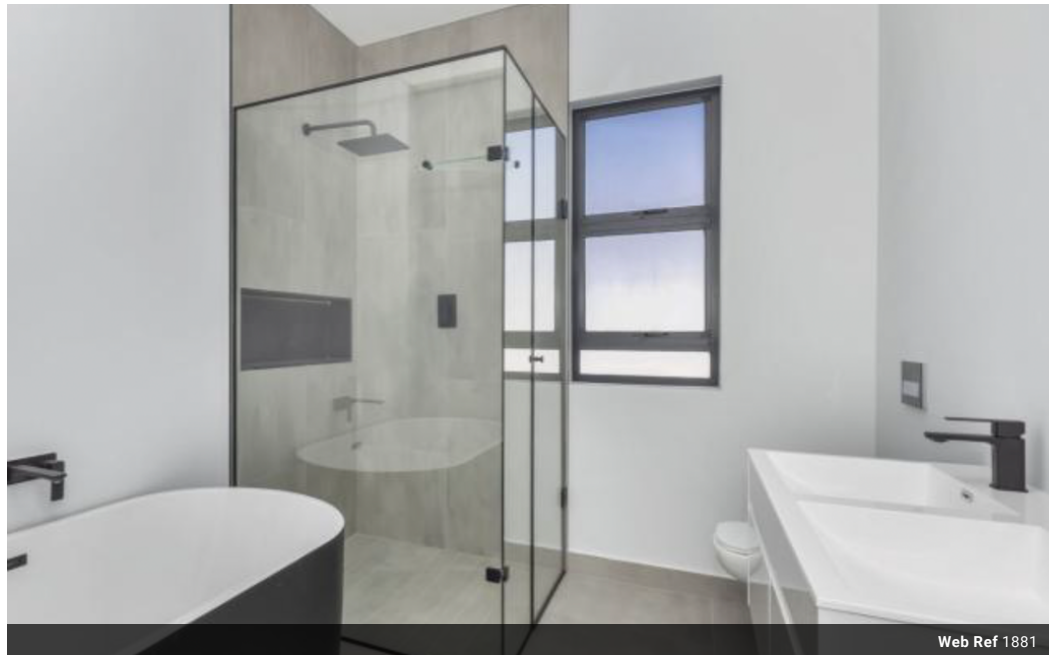
Corlia Cohen
0716048493
corlia@aska.co.za

Contact Head Office

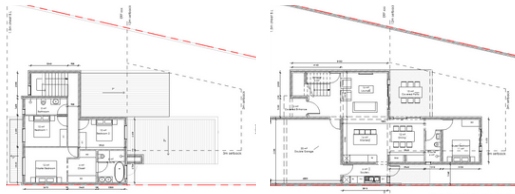
021 5562333

Aska House, Newlands on Main, 1st Floor,
Piazza Level, Main Rd, Newlands

4 Bedroom House For Sale in Sandown



Web Ref 1881



R4,195,000

 4  3  2

Monthly Bond Repayment R42,588.85

Calculated over 20 years at 10.75% with no deposit.

Transfer Costs R305,124.00 **Bond Costs** R53,495.00

These calculations are only a guide. Please ask your conveyancer for exact calculations.

Ultra-Modern 4 Bedroom Home For Sale in Sandown

4 Bedrooms • 3 Bathrooms • Indoor Braai • 340 m² Plot

This sleek and sophisticated home in Sandown offers the perfect blend of modern design and functional living. Set on a spacious 340m² plot, this 4-bedroom, 3-bathroom property is ideal for families or professionals seeking stylish comfort with room to grow.

Key Features:

- 4 spacious bedrooms, including a main suite with elegant finishes
- 3 contemporary bathrooms
- Open-plan living and dining areas, filled with natural light and clean lines
- Indoor braai area, ideal for entertaining all year round
- Double garage with direct access into the home
- Secure, modern living in one of Cape Town's fastest-growing suburbs

This home is perfect for those who love modern aesthetics, quality finishes, and open, airy spaces. Whether you're relaxing with family or entertaining...

Features

Pets Allowed Yes

Interior

| | |
|--------------|----|
| Bedrooms | 4 |
| Bathrooms | 3 |
| Kitchens | 1 |
| Recep. Rooms | 2 |
| Furnished | No |

Exterior

| | |
|---------------------|-------|
| Garages | 2 |
| Carports / Parkings | 2 |
| Security | No |
| Dom. Accom. | 1 |
| Pool | No |
| Views | False |

Sizes

| | |
|------------|-------|
| Floor Size | 220m² |
| Land Size | 340m² |

