



**Warren Greeff**  
072 192 2693  
warren@aska.co.za



**Corlia Cohen**  
0716048493  
corlia@aska.co.za

Contact Head Office

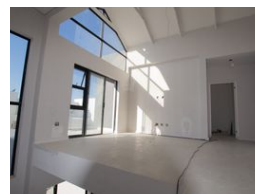
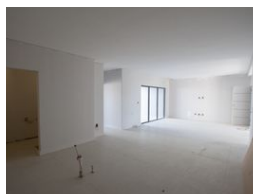
021 5562333

Aska House, Newlands on Main, 1st Floor,  
Piazza Level, Main Rd, Newlands

## 4 Bedroom House For Sale in Sandown



Web Ref 1532



**R4,495,000**

4 3.5 2

**Monthly Bond Repayment** R45,634.54

Calculated over 20 years at 10.75% with no deposit.

**Transfer Costs** R342,459.00 **Bond Costs** R57,265.00

These calculations are only a guide. Please ask your conveyancer for exact calculations.

**Monthly Levy** R300 **Monthly Rates** R1,350

### Under Constuction - Step Into Comfort, Style, and Effortless Living

This home features two luxurious en-suite bedrooms, including a stunning main suite with elegant walk-in cupboards—a serene retreat to unwind at the end of the day.

A third guest bedroom, also with its own en-suite, ensures your visitors enjoy complete comfort and privacy.

Upstairs, the cozy pajama lounge invites you to slow down—ideal for Sunday morning lounging, movie nights, or simply enjoying time with those you love most.

Designed with entertainers in mind, the home boasts a covered patio with a built-in braai, and a separate braai pit in the expansive backyard—perfect for relaxed summer evenings under the stars. There's ample space to add a sparkling pool, making it an oasis for celebration, connection, and unforgettable moments.

Every detail has been thoughtfully crafted to bring ease, elegance, and joy into your...

### Features

**Pets Allowed** Yes

#### Interior

|              |     |
|--------------|-----|
| Bedrooms     | 4   |
| Bathrooms    | 3.5 |
| Kitchens     | 1   |
| Recep. Rooms | 3   |
| Furnished    | No  |

#### Exterior

|                     |       |
|---------------------|-------|
| Garages             | 2     |
| Carports / Parkings | 2     |
| Security            | No    |
| Pool                | No    |
| Views               | False |

#### Sizes

|            |                   |
|------------|-------------------|
| Floor Size | 241m <sup>2</sup> |
| Land Size  | 250m <sup>2</sup> |

